



Taichung 台中 (Taiwan 台灣)

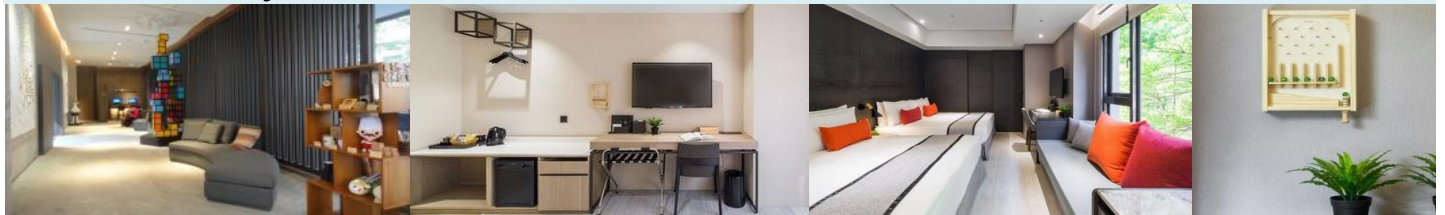
3 days 2 nights 三日兩夜

From **HK\$1,690**



New Hotel Collections

ICASA Hotel by Cosmos Creation 天成文旅-回行旅




Package includes	套餐包括：	✓ Economy class air-ticket	✓ 2-night accommodation	✓ Daily breakfast
Departure dates	出發日期：	Oct 3, 2017 – Mar 30, 2018		
Selling period	銷售日期：	Oct 3, 2017 – Mar 30, 2018		



ICASA Hotel by Cosmos Creation - Newly opening in Dec, 2016 !

ICASA Hotel located in Taichung's busiest Feng-Jia commercial district. Hotel dressed in the neutral tones of white, gray and timber in a minimalist urban style, and furnished with abundant art pieces and potted plants. ICASA Hotel is a 'Home' for the senses in the middle of a bustling city.

「天成文旅·回行旅」位於台中最熱鬧的逢甲商圈，以簡約的白、灰與木質色調貫穿整體設計，風格呈現都市化的簡約，並使用大量的植栽與藝術品闡述出「回行旅」的特色熱鬧城市中提供一個有如「家」的溫暖與知性氛圍的旅店。

Hotel 酒店	Period of Stay 住宿日期	Room Category 房間種類	Breakfast 早餐	Adult Twin 成人雙人房	Adult Extra Bed 成人加床	Child Extra Bed 小童加床
ICASA Hotel by Cosmos Creation 天成文旅 - 回行旅 	Oct 3 - Mar 31	Superior Room (Double-Bed)	✓	\$1,690	\$1,490 Sofa Bed	\$1,290 Sofa Bed
		Family Quad Room (2 Double-Beds)		\$1,620 Min. 3 Persons	N/A	N/A
		Deluxe Quad Room (2 Double-Beds)		\$1,490 Min. 4 Persons	N/A	N/A
				\$1,690 Min. 3 Persons	\$1,550 Sofa Bed	\$1,320 Sofa Bed
				\$1,550 Min. 4 Persons		

Added Benefits:

- Enjoy in-room mini-bar & welcome snacks
- Access to Icasa Lounge, enjoy all-day coffee & tea and Happy Hour cocktails (19:00 - 21:00)

Optional One-way Private Transfer (Validity: until 31 Dec '17)	Car Capacity (Per Car)	Per car per way
Taichung International Airport ← / → Taichung City or Taichung THSR Station	1 - 3 Persons + luggage	\$260
	4 - 6 Persons + luggage	\$320

Room surcharge & Blackout period 酒店附加費及不適用日期

Hotel 酒店	Period of Stay 住宿日期	Room Category 房間種類	Per room per night 每房每晚
ICASA Hotel by Cosmos Creation	Oct 3 - Mar 31 (Sat)	All room categories	\$210
	Oct 3 - 10 / Dec 29 - 31		\$350

Flight surcharge 航班附加費

Departure date 出發日期	Applicable flights / Booking Class Code 適用航班 / 訂位編號	Adult 成人	Child 小童	
Oct 3 - Dec 21 / Dec 27 - Feb 13 / Feb 19 - Mar 27 (Sun - Wed)	Hong Kong > Taichung valid on KA490 Taichung > Hong Kong valid on KA491	Q	Nil	
Oct 3 - Dec 21 / Dec 27 - Feb 13 / Feb 19 - Mar 27 (Thu - Sat)		Q	\$50	\$40
Oct 3 - Dec 21 / Dec 27 - Feb 13 / Feb 19 - Mar 27	Valid on any KA operating flights	N	\$260	\$200
		N	\$400	\$300
S		\$770	\$580	
V		\$1,080	\$810	
Oct 3 - Feb 13 / Feb 19 - Mar 30		L	\$1,380	\$1,040
Oct 3 - Mar 30		M	\$2,020	\$1,520

Package price includes 套票價錢包括：

- Round trip economy class air ticket from Hong Kong to Taichung on Cathay Dragon.
國泰港龍航空來回香港至台中之經濟客位機票。
- Two consecutive nights accommodation with breakfast.
兩晚酒店住宿連早餐。
- Hong Kong TIC levy.
香港旅遊業議會印花稅。

Terms & Conditions 細則及條款：

- The above prices are quoted per person based on double occupancy & only applicable for minimum 2 adults traveling & check-in together in the same pattern.
以上價格以每位計算，並須最少兩位成人同行及登機，以及雙人入住酒店房間。
- The above prices are subject to Hong Kong airport passenger security charge, airport tax, airport construction fee & administration fee.
以上價格需另加香港機場旅客保安費、機場稅、機場建設費及行政費。
- Package price does not include :-
 - Cost of travel documents and visa fees.
 - Personal expenses, optional tours, transfers and other services that are not specified.
 - Expenses incurred owing to the delay of air / land carriers that are beyond our control.
 旅遊套票不包括：-
 - 簽證及旅遊證件費用
 - 個人開支、自選遊、接送、膳食、旅遊保險及未列明之收費
 - 因航班或其他延誤而導致的開支
- The above prices are applicable to specific flight, air ticket booking class code, hotel choice, room type and departure date only, and are subject to the supply and policy of airline and hotels. Swire Travel may adjust prices without prior notice. All prices are subject to change at the time of booking.
價格只適用於指定航班、指定機票票價種類 (Booking Class Code)、酒店選擇、房間類別及出發日期，並受航空公司及酒店之供應情況及政策限制。太古旅遊或會因應情況就價格作出調整。一切以報名時為準。
- A non-refundable deposit of HK\$500 is required upon confirmation, balance payment is required at least 14 days prior to departure or deadline set by airline or hotel whichever is earlier.
套餐價格一經確認，訂金每位\$500，須於出發前14天或機位 或酒店確認期限前繳付餘數 (以較早之日期計算)。
- Ticket validity 2-7 days. Eligible subclasses for mileage accrual : D/I/E/Y/B/H/K/M/L/V/S/N .
機票有效期 2-7 天，適用累積飛行哩數之訂位代號 : D/I/E/Y/B/H/K/M/L/V/S/N .
- Accommodation should be completed on or before 31 Mar '18 or specified by individual hotel.
須於2018年3月31日或於酒店指定日期前完成酒店住宿。
- No amendment, cancellation and refund is allowed once documents are issued.
機票及酒店套票發出後，將不接受更改，取消及退款。
- Other terms and conditions apply, for further details, please contact Swire Travel.
產品及優惠受其他條款及細則限制，詳情請向太古旅遊查詢。
- Swire Travel reserves the rights to amend terms & conditions. In case of any disputes, Swire Travel's decision shall be final.
太古旅遊有權修改條款及細則，如有任何爭議，太古旅遊保留最終決定權。
- All prices, information and images in this flyer are for reference only.
本宣傳單張之價格，資料及圖片只供參考。